

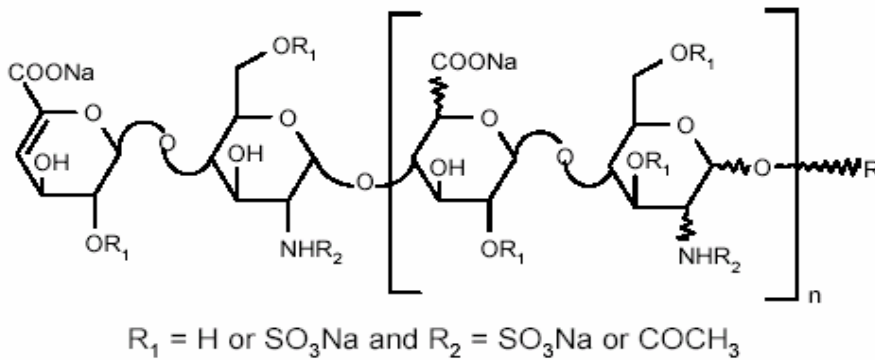
**PRODUCT INFORMATION**  
**ENOXAPARIN WINTHROP AND ENOXAPARIN WINTHROP FORTE**

**NAME OF THE MEDICINE**

**Australian Approved Name**

Enoxaparin sodium

**Chemical Structure**



R	X = 15 to 25%		n = 0 to 20
	100 - X	H	n = 1 to 21

X = Percent of polysaccharide chain containing 1, 6 anhydro derivative on the reducing end

**DESCRIPTION**

Enoxaparin sodium is a low molecular weight heparin (MW approx. 4500 D). The drug substance is the sodium salt. The molecular weight distribution is:

<2000 daltons 12 to 20%

2000 to 8000 daltons 68 to 82%

>8000 daltons ≤18%

Enoxaparin sodium is obtained by alkaline depolymerisation of heparin benzyl ester derived from porcine intestinal mucosa. Its structure is characterised by a 4-enopyranose uronate group at the non-reducing end. About 20% (ranging between 15% and 25%) of the enoxaparin structure contains a 1,6 anhydro derivative on the reducing end of the polysaccharide chain.

Enoxaparin sodium solution for injection also contains water for injections as an inactive ingredient.

## PHARMACOLOGY

In comparison with natural heparin Enoxaparin Winthrop is characterised by a clear increase in the ratio between anti-Xa and anti-IIa activities which is always greater than 4.

It has several actions on the coagulation pathway through binding to anti-thrombin III. The anti-thrombotic activity is related to inhibition of thrombin generation and inhibition of two main coagulation factors: Factor Xa and Thrombin. Enoxaparin Winthrop also induces a sustained release of the Tissue Factor Pathway Inhibitor *in vivo*.

In the experimental animal, Enoxaparin Winthrop was found to have potent anti-thrombotic properties with a minimum effect on bleeding.

### Pharmacokinetics

The pharmacokinetic parameters of Enoxaparin Winthrop were studied from the changes in plasma anti-Xa activity.

After injection of Enoxaparin Winthrop by the subcutaneous route (SC), the product is rapidly and completely absorbed. The absolute bioavailability is over 90%.

The maximum plasma activity is observed after 3 hours and is, on average, 1.6 µg/mL after the SC injection of a 20 mg dose and 3.8 µg/mL after the injection of a 40 mg dose. The anti-Xa activity, measured like that of unfractionated heparin (UFH), gives values of approximately 0.16 and 0.38 IU/mL respectively.

A 30 mg intravenous (IV) bolus immediately followed by 1 mg/kg SC provided initial peak anti-Xa levels of 1.16 IU/mL (n = 16) and an average exposure corresponding to 84% of steady-state levels. Steady-state is achieved on the second day of treatment following continued SC dosing of 1 mg/kg every 12 hours. The aPTT (activated partial thromboplastin time) immediately after the first SC injection was 49.6 seconds. The average aPTT prolongation value on Day 1 was about 16% higher than on Day 4.

The elimination of enoxaparin (based on anti-Xa activity levels) is characterised by a half-life of approximately 4.4 hours for a dose of 40 mg. At higher doses of 73.8 mg to 132.6 mg, a study has shown that anti-Xa activity levels exhibit a first phase elimination half-life of ~5 hours and a second stage elimination half-life of ~9 hours. Following a 40 mg dose, anti-Xa activity may persist in the plasma for 24 hours.

Elimination of Enoxaparin Winthrop at prophylactic dosages is not significantly modified in patients with mild (creatinine clearance 50-80 mL/min) to moderate (creatinine clearance 30-50 mL/min) renal insufficiency. It is slightly reduced in the elderly ( $t_{1/2}$  = 6-7 hours). This modification has no effect on the doses or the frequency of injections, as there is no plasma accumulation in elderly subjects.

The anti-Xa activity generated by Enoxaparin Winthrop does not cross the placental barrier during the second trimester of pregnancy.

Anti-Xa activity generated by Enoxaparin Winthrop is localised within the vascular space.

Metabolic breakdown of Enoxaparin Winthrop is slight and takes place mainly in the liver (desulphation and depolymerisation). Small amounts of the product are eliminated by the kidneys in an intact or slightly degraded form.

## CLINICAL TRIALS

### Hip Replacement Surgery

Two randomised single-centre clinical trials were conducted in patients undergoing hip replacement surgery to determine if extended prophylaxis with Enoxaparin Winthrop 40 mg SC daily, given for up to 3 weeks post hospital discharge was effective in reducing the incidence of deep vein thrombosis (DVT) as compared to placebo. All patients were initially treated with Enoxaparin Winthrop 40-mg SC daily, beginning up to 12 hours prior to surgery in an open-label fashion. Patients who did not exhibit venous thromboembolic disease (either by negative venography in one study or by absence of clinical signs or symptoms in the other study) at the completion of in-hospital treatment were randomised to receive extended prophylaxis with either Enoxaparin Winthrop (n = 221) or placebo (n = 220) post-discharge in a blinded fashion. The incidence of deep vein thrombosis (total and proximal) during extended prophylaxis was significantly lower for Enoxaparin Winthrop (total: 12%; proximal: 6%) compared to placebo (total: 28%; proximal: 16%) in both studies. Bleeding events were limited to minor haemorrhages which were 11% for the Enoxaparin Winthrop treatment group versus 3% for the placebo treatment group. The majority of the bleeding events for both groups were injection site haemorrhages (9% Enoxaparin Winthrop vs 2% placebo).

### Thromboembolism Prophylaxis in Medical Patients

One randomised, double-blind, placebo-controlled, parallel group study was conducted to compare enoxaparin 20 mg once daily (E20), enoxaparin 40 mg once daily (E40) and placebo in the prophylaxis of VTE in patients hospitalised with acute heart failure, acute respiratory disease, acute infectious disease, acute rheumatic disorders, or acute inflammatory bowel disease. The treatment lasted 6-14 days. The primary efficacy endpoint was assessed in 866 patients – 288 placebo, 287 E20 and 291 E40 (respectively, 77.6%, 78.8% and 79.3% of those randomised to each group). The incidence of VTE was significantly lower in the E40 group (16/291, 5.5%) than in the placebo group (43/288, 14.9%), with a relative risk of 0.37 (95% CI 0.22-0.63, p = 0.0002). The incidence of VTE in the E20 group (43/287, 15%) was not significantly different from that in the placebo group, with a relative risk of 1.03 (95% CI 0.70-1.51, p = 0.90).

### Unstable Angina and Non-Q-Wave Myocardial Infarction

In an international multicentre study [ESSENCE], 3171 patients enrolled at the acute phase of unstable angina or non-Q-wave myocardial infarction were randomised to receive in association with aspirin (100 to 325 mg once daily), either subcutaneous Enoxaparin Winthrop 1 mg/kg every 12 hours (n = 1607) or intravenous UFH adjusted based on activated partial thromboplastin time (aPPT; n = 1564). Patients had to be treated in hospital for a minimum of 2 days and a maximum of 8 days, until clinical stabilisation, revascularisation procedures or hospital discharge; the median duration of treatment was 2.6 days in both groups and patients were followed up to 30 days. Enoxaparin Winthrop significantly decreased the incidence of recurrent angina, myocardial infarction and death, with an absolute event rate of the composite triple endpoint at day 14 of 16.6% in the Enoxaparin Winthrop group, compared to 19.8% in the heparin group (p = 0.02). This represented a relative risk reduction of 16.2%, which remained statistically significant at 30 days of follow up. Furthermore, the need for revascularisation with percutaneous, transluminal coronary angioplasty (PTCA) or coronary artery bypass grafting (CABG) was significantly less frequent in the Enoxaparin Winthrop group (27.0% vs 32.2%, p = 0.001). The 30 day incidence of major bleeding was not significantly different between the two treatment groups (6.5% in the Enoxaparin Winthrop group vs 7.0% in the heparin group, p = 0.566), with an increase in minor bleeding observed in the Enoxaparin Winthrop group (18.4% vs 14.2%, p = 0.001), primarily constituting ecchymoses at injection sites.

## Acute ST-segment Elevation Myocardial Infarction (STEMI)

In a multicentre, double-blind, double-dummy, parallel group study, 20479 patients with STEMI within 6 hours of onset and eligible to receive fibrinolytic therapy were randomised to receive either enoxaparin or UFH. All patients were also treated with aspirin for a minimum of 30 days. Study medication was administered between 15 minutes before and 30 minutes after the initiation of fibrinolytic therapy. Unfractionated heparin was administered beginning with an IV bolus of 60 IU/kg (maximum 4000 IU) and followed by an infusion of 12 IU/kg per hour (initial maximum 1000 IU per hour) that was adjusted to maintain an aPTT of 1.5 to 2.0 times the control value. The IV infusion was to be given for at least 48 hours. The enoxaparin dosing strategy was adjusted according to the patient's age and renal function. For patients younger than 75 years of age, enoxaparin was given as a single 30 mg intravenous bolus plus a 1 mg/kg SC dose followed by an SC injection of 1 mg/kg every 12 hours. For patients 75 years of age or older, the IV bolus was not given and the SC dose was reduced to 0.75 mg/kg every 12 hours. For patients with severe renal insufficiency (estimated creatinine clearance of less than 30 mL per minute), the dose was to be modified to 1 mg/kg every 24 hours. The SC injections of enoxaparin were given until hospital discharge or for a maximum of eight days (whichever came first). The mean treatment duration for enoxaparin was 6.6 days. The mean treatment duration of UFH was 54 hours.

When percutaneous coronary intervention (PCI) was performed during the study medication period, patients were to receive antithrombotic support with blinded study drug. Therefore, for patients on enoxaparin, the PCI was to be performed on enoxaparin (no switch) using the regimen established in previous studies, i.e. no additional dosing if the last SC administration was given less than 8 hours before balloon inflation; IV bolus of 0.3 mg/kg enoxaparin if the last SC administration was given more than 8 hours before balloon inflation.

A total of 20506 patients were enrolled in the study, and 20479 patients were included in the intention to treat (ITT) population. Patients ranged in age from 20-99 years (mean age 59.8 years), with 23.5 % of patients female and 76.5% male. Race was distributed as follows: 87.2% Caucasian, 0.2% Black, 9.8% Asian and 2.8% other. Medical history included previous MI (13%), hypertension (44%), diabetes (15%) and angiographic evidence of CAD (5%). Concomitant medication included aspirin (95%), beta-blockers (86%), ACE inhibitors (78%), statins (70%) and clopidogrel (27%). The MI at entry was anterior in 43%, non-anterior in 56% and both in 1%. All patients were treated with aspirin at a dose of 75 to 325 mg for a minimum of 30 days. A fibrinolytic agent was administered to all but 4 patients, with 79.8% receiving a fibrin-specific agent (19% tenecteplase, 5% reteplase and 55% alteplase) and 20.2% receiving streptokinase. Following inclusion in this trial, 4716 patients underwent further PCI.

The primary efficacy endpoint was the composite of death from any cause or myocardial reinfarction in the first 30 days after randomisation. The efficacy data provided in the Table below show that the rate of the primary efficacy endpoint (death or myocardial re-infarction) was 9.9% in the enoxaparin group, as compared with 12.0% in the UFH group, that is a 17% reduction in the relative risk, representing an absolute risk reduction of 2.1% ( $P<0.001$ ).

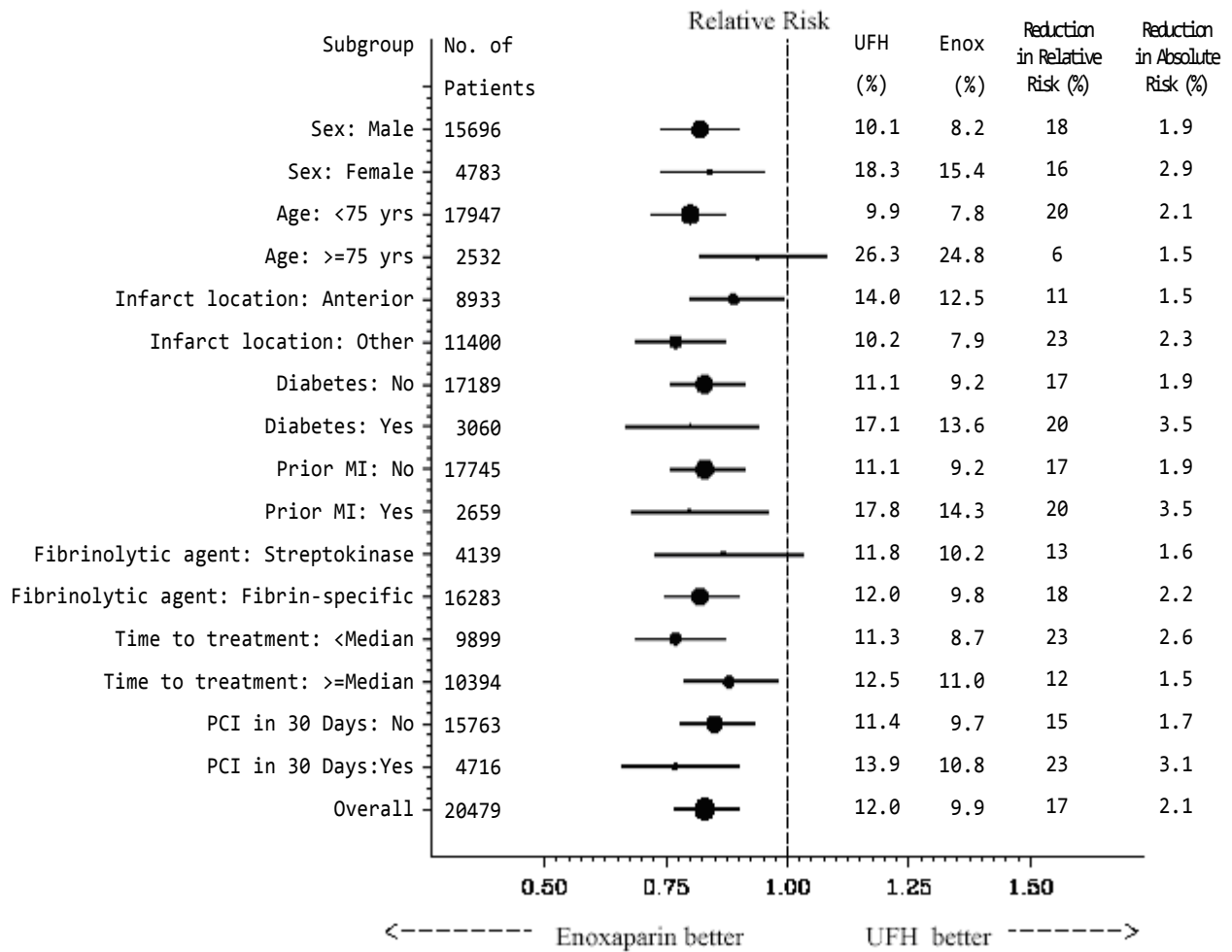
## Efficacy of Enoxaparin in the Treatment of Acute STEMI

	Enoxaparin (N = 10256)	UFH (N = 10223)	Reduction in Absolute Risk	Relative Risk (95% CI)	P Value
<b>Outcome at 48 hours</b>					
Death or Myocardial Re-infarction	478 (4.7)	531 (5.2)	0.5	0.90 (0.80 to 1.01)	0.08
Death	383 (3.7)	390 (3.8)	0.1		0.76
Myocardial Re-infarction	102 (1.0)	156 (1.5)	0.5	0.98 (0.85 to 1.12)	<0.001
Urgent Revascularisation	74 (0.7)	96 (0.9)	0.2	0.65 (0.51 to 0.84)	0.09
Death or Myocardial Re-infarction or Urgent Revascularisation	548 (5.3)	622 (6.1)	0.8	0.77 (0.57 to 1.04)	0.02
				0.88 (0.79 to 0.98)	
<b>Outcome at 8 Days</b>					
Death or Myocardial Re-infarction	740 (7.2)	954 (9.3)	2.1	0.77 (0.71 to 0.85)	<0.001
Death	559 (5.5)	605 (5.9)	0.4		0.15
Myocardial Re-infarction	204 (2.0)	379 (3.7)	1.7	0.92 (0.82 to 1.03)	<0.001
Urgent Revascularisation	145 (1.4)	247 (2.4)	1.0	0.54 (0.45 to 0.63)	<0.001
Death or Myocardial Re-infarction or Urgent Revascularisation	874 (8.5)	1181 (11.6)	3.1	0.59 (0.48 to 0.72)	<0.001
				0.74 (0.68 to 0.80)	
<b>Outcome at 30 Days</b>					
<b>Primary efficacy endpoint (Death or Myocardial Re-infarction)</b>	<b>1017 (9.9)</b>	<b>1223 (12.0)</b>	<b>2.1</b>	<b>0.83 (0.77 to 0.90)</b>	<b>&lt;0.001</b>
Death	708 (6.9)	765 (7.5)	0.6		0.11
Myocardial Re-infarction	352 (3.4)	508 (5.0)	1.6	0.92 (0.84 to 1.02)	<0.001
Urgent Revascularisation	213 (2.1)	286 (2.8)	0.7	0.69 (0.60 to 0.79)	<0.001
Death or Myocardial Re-infarction or Urgent Revascularisation	1199 (11.7)	1479 (14.5)	2.8	0.74 (0.62 to 0.88)	<0.001
				0.81 (0.75 to 0.87)	

Note: Urgent revascularisation denotes episodes of recurrent myocardial ischaemia (without infarction) leading to the clinical decision to perform coronary revascularization during the same hospitalization. CI denotes confidence intervals.

The treatment benefits of enoxaparin, evident for a number of efficacy outcomes, emerged at 48 hours, at which time there was a 35% reduction in the relative risk of myocardial re-infarction, as compared with UFH (P <0.0001), representing an absolute risk reduction of 0.5%. The beneficial effect of enoxaparin on the primary endpoint was consistent across key subgroups including age, gender, infarct location, history of diabetes, history of prior myocardial infarction, fibrinolytic administered and time to treatment with study drug, however it is necessary to interpret such subgroup analyses with caution (see Figure below).

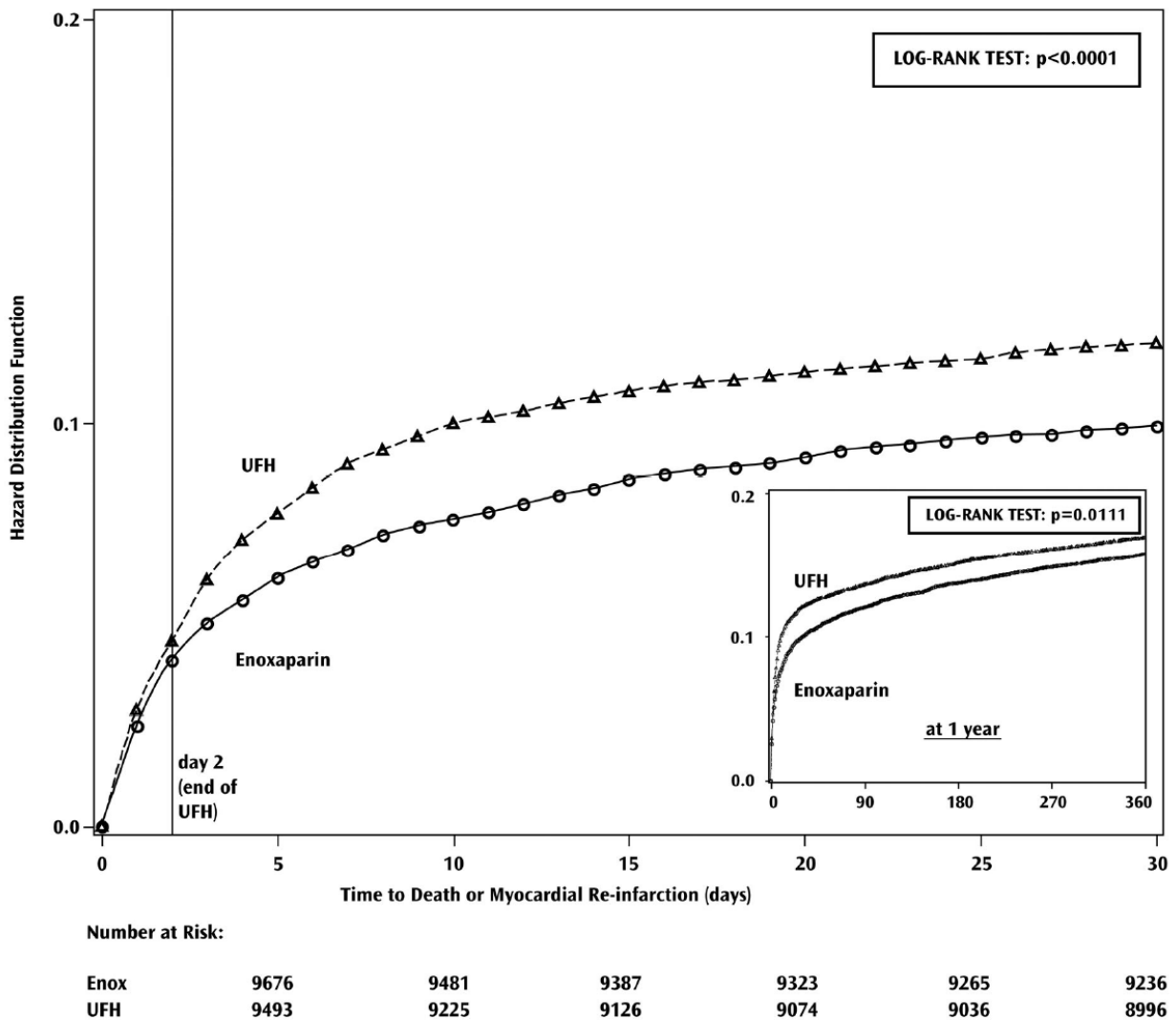
## Relative Risks of and Absolute Event Rates for the Primary Endpoint at 30 Days in Various Subgroups



The primary efficacy endpoint was the composite of death from any cause or myocardial re-infarction in the first 30 days. The overall treatment effect of enoxaparin as compared to the UFH is shown at the bottom of the figure. For each subgroup, the circle is proportional to the number of patients and represents the point estimate of the treatment effect and the horizontal lines represent the 95% confidence intervals. Fibrin-specific fibrinolytic agents included alteplase, tenecteplase and reteplase. Time to treatment indicates the time from the onset of symptoms to the administration of study drug (median 3.2 hours). Although there was some variation in the estimate of the treatment effect of enoxaparin on the primary endpoint across the subgroups shown, all P values in tests for interaction were non significant.

The beneficial effect of enoxaparin on the primary endpoint observed during the first 30 days was maintained over a 12 month follow-up period (see Figure below).

**Kaplan-Meier plot - death or myocardial re-infarction at 30 days - ITT population**



There was a significant treatment benefit of enoxaparin, as compared with UFH, in patients who underwent PCI within 30 days after randomisation (23% relative risk reduction, representing an absolute risk reduction of 3.1%) or who were treated medically (15 % relative risk reduction, representing an absolute risk reduction of 1.7%,  $P = 0.27$  for interaction).

The rates of major haemorrhages (defined as requiring 5 or more units of blood for transfusion, or 15% drop in hematocrit or clinically overt bleeding, including intracranial haemorrhage) at 30 days were 2.1% in the enoxaparin group and 1.4% in the UFH group. The rates of intracranial haemorrhage at 30 days were 0.8% in the enoxaparin group 0.7% in the UFH group.

The rate of the 30-day composite endpoint of death, myocardial re-infarction or intracranial haemorrhage (a measure of net clinical benefit) was significantly lower ( $p < 0.0001$ ) in the enoxaparin group (10.1%) as compared to the heparin group (12.2%), representing a 17% relative risk reduction in favour of treatment with enoxaparin, representing an absolute risk reduction of 2.1%.

## Renal Impairment

A linear relationship between anti-Xa plasma clearance and creatinine clearance at steady-state has been observed, which indicates decreased clearance of Enoxaparin Winthrop in patients with reduced renal function. Anti-Xa exposure represented by AUC, at steady-state, is increased by 20% in mild (creatinine clearance 50-80 mL/min) and 21% in moderate (creatinine clearance 30-50 mL/min) renal impairment after repeated subcutaneous 40 mg once daily doses. In patients with severe renal impairment (creatinine clearance <30 mL/min), the AUC at steady-state is significantly increased on average by 65% after repeated subcutaneous 40 mg once daily doses.

## Weight

In obese subjects, after repeated subcutaneous 1.5 mg/kg daily dosing, mean AUC of anti-Xa activity is 19% higher at steady-state in obese healthy volunteers (BMI >30 kg/m<sup>2</sup>) compared to non-obese healthy control subjects (18 < BMI = <25 kg/m<sup>2</sup>), while maximal plasma activity is not increased. There is a lower weight-adjusted clearance (L/h/kg) in obese subjects compared to non-obese subjects.

In low-weight subjects, anti-Xa exposure is 52% higher in healthy low-weight women (<45 kg but BMI >18 kg/m<sup>2</sup>) and 27% higher in healthy low-weight men (<57 kg but BMI >18 kg/m<sup>2</sup>) when compared to healthy normal weight subjects (<60 kg for women & >72 kg for men with BMI of 18-28 kg/m<sup>2</sup> for both genders). The maximal plasma activity was also increased by 45% for low-weight women and 31% for low-weight men compared to their respective normal weight controls.

## Elderly

Based on the results of a pharmacokinetic analysis, the Enoxaparin Winthrop kinetic profile is not different in elderly subjects compared to younger subjects when renal function is normal. However, since renal function is known to decline with age, elderly patients may show reduced elimination of Enoxaparin Winthrop.

## INDICATIONS

- Prevention of thrombo-embolic disorders of venous origin in patients undergoing orthopaedic and general surgery.
- Prophylaxis of venous thromboembolism in medical patients bedridden due to acute illness.
- Prevention of thrombosis in extra-corporeal circulation during haemodialysis.
- Treatment of established deep vein thrombosis.
- Treatment of unstable angina and non-Q-wave myocardial infarction, administered concurrently with aspirin.
- Treatment of acute ST-segment Elevation Myocardial Infarction (STEMI) as an adjunctive to thrombolytic treatment, including patients to be managed medically or with subsequent Percutaneous Coronary Intervention (PCI).

## CONTRAINDICATIONS

- Allergy to Enoxaparin Winthrop, heparin or its derivatives including other low molecular weight heparins.
- Acute bacterial endocarditis.
- Conditions with a high risk of uncontrolled haemorrhage including major bleeding disorders, focal lesions, haemorrhagic stroke, active ulcerative conditions showing a tendency to haemorrhage (e.g. peptic ulcer, ulcerative colitis).



- Thrombocytopenia associated with a positive *in vitro* test for anti platelet antibody in the presence of enoxaparin sodium.

## **PRECAUTIONS**

### **LOW MOLECULAR WEIGHT HEPARIN PRODUCTS ARE NOT CLINICALLY INTERCHANGEABLE.**

They differ in their manufacturing process, molecular weights, specific anti-Xa activities, units and dosage. The biological activity of different low molecular weight heparins cannot be expressed in a test allowing for a simple dose comparison. Different low molecular weight heparins may not be bioequivalent in terms of their labelled anti-Xa activities and alternative products should not be introduced nor interchanged during a course of treatment.

Not to be administered by the intramuscular route.

### **Risk of Haemorrhage**

Enoxaparin Winthrop should be used with extreme caution in conditions with increased risk of haemorrhage, such as bacterial endocarditis, congenital or acquired bleeding disorders, active ulcerative and angiodysplastic gastrointestinal disease, hemorrhagic stroke, or shortly after brain, spinal, or ophthalmological surgery, or in patients treated concomitantly with platelet inhibitors. Major haemorrhages including retroperitoneal and intracranial bleeding have been reported. Some of these cases have been fatal. As with other anticoagulants, bleeding can occur at any site during therapy with Enoxaparin Winthrop (see Adverse Effects). An unexplained fall in hematocrit or blood pressure should lead to a search for a bleeding site and appropriate treatment instituted.

### **Concomitant Medical Conditions**

Enoxaparin Winthrop should be used with caution in patients with the following conditions: hepatic insufficiency, a bleeding diathesis, uncontrolled arterial hypertension, a history of gastrointestinal ulceration, impaired haemostasis, recent ischaemic stroke, diabetic retinopathy, recent neuro- or ophthalmologic surgery and haemorrhage.

### **Heparin-Induced Thrombocytopenia**

Enoxaparin Winthrop is to be used with extreme caution in patients with a history of heparin-induced (including low molecular weight heparins) thrombocytopenia with or without thrombosis. The risk of heparin induced thrombocytopenia may persist for several years. If history of heparin-induced thrombocytopenia is suspected, *in vitro* platelet aggregation tests have limited predictive value. The decision to use Enoxaparin Winthrop in such a case must be made only in consultation with an expert in the field.

### **Spinal/Epidural Anaesthesia**

There have been rare cases of neuraxial haematomas reported with the concurrent use of Enoxaparin Winthrop and spinal/epidural anaesthesia resulting in long-term or permanent paralysis. These events are rare with Enoxaparin Winthrop dosage regimens 40 mg once daily or lower. The risk is greater with higher Enoxaparin Winthrop dosage regimens, use of post-operative indwelling catheters or the concomitant use of additional drugs affecting haemostasis such as non-steroidal anti-inflammatory drugs (NSAIDs) (See Precautions: Interactions with Other Medicines). The risk also appears to be increased by traumatic or repeated neuraxial puncture or in patients with a history of spinal surgery or spinal deformity.

To reduce the potential risk of bleeding associated with the concurrent use of Enoxaparin Winthrop and epidural or spinal anaesthesia/analgesia, the pharmacokinetic profile of the drug should be considered (see Pharmacology: Pharmacokinetics). Placement and removal of the needle/catheter is best performed when the anticoagulant effect of enoxaparin is low; however, the exact timing to reach a sufficiently low anticoagulant effect in each patient is not known.

Placement or removal of an epidural or spinal needle or catheter should be delayed for at least 12 hours after administration of lower doses (20mg once daily or 40mg once daily) of enoxaparin, and at least 24 hours after the administration of higher doses (0.75mg/kg twice daily, 1 mg/kg twice daily, or 1.5mg/kg once daily) of enoxaparin. Anti-Xa levels are still detectable at these time points, and these delays are not a guarantee that neuraxial haematoma will be avoided. Patients receiving the 0.75mg/kg twice daily dose or the 1mg/kg twice daily dose should not receive the second enoxaparin dose in the twice daily regimen to allow a longer delay before catheter placement or removal. Likewise, although a specific recommendation for timing of a subsequent enoxaparin dose after catheter removal cannot be made, consider delaying this next dose for at least four hours, based on a benefit-risk assessment considering both the risk for thrombosis and the risk for bleeding in the context of the procedure and patient risk factors. For patients with creatinine clearance <30ml/minute, additional considerations are necessary because elimination of enoxaparin is more prolonged; consider doubling the timing of removal of a catheter, at least 24 hours for the lower prescribed dose of enoxaparin (20mg once daily or 40 mg once daily) and at least 48 hours for the higher dose (0.75mg/kg/twice daily, 1mg/kg/twice daily or 1.5mg/kg/once daily).The patient's regular Enoxaparin Winthrop dose may need to be delayed to ensure this. If blood is present during needle/catheter placement, the subsequent dose of Enoxaparin Winthrop should be delayed for 24 hours after placement.

Should the physician decide to administer anticoagulation in the context of epidural/spinal anaesthesia or lumbar puncture, extreme vigilance and frequent monitoring must be exercised to detect any signs and symptoms of spinal haematoma such as midline back pain, sensory and motor deficits (numbness or weakness in lower limbs), bowel and/or bladder dysfunction. Patients should be instructed to inform their physician immediately if they experience any of the above signs or symptoms. If signs or symptoms of spinal haematoma are suspected, urgent diagnosis and treatment including spinal cord decompression should be initiated.

### **Thrombocytopenia**

Thrombocytopenia can occur with the administration of Enoxaparin Winthrop. Moderate thrombocytopenia (platelet counts between 100,000/mm<sup>3</sup> and 50,000/mm<sup>3</sup>) occurred at a rate of 1.3% in patients given Enoxaparin Winthrop, 1.2% in patients given heparin, and 0.7% in patients given placebo in clinical trials. Platelet counts less than 50,000/mm<sup>3</sup> occurred at a rate of 0.1% in patients given Enoxaparin Winthrop, in 0.2% of patients given heparin, and 0.4% of patients given placebo in the same trials. Thrombocytopenia of any degree should be monitored closely. If the platelet count falls below 100,000/mm<sup>3</sup>, Enoxaparin Winthrop should be discontinued. Cases of heparin-induced thrombocytopenia with thrombosis have also been observed in clinical practice. Some of these cases were complicated by organ infarction, limb ischemia, or death.

### **Prosthetic Heart Valves**

There have been no adequate studies to assess the safe and effective use of Enoxaparin Winthrop in preventing thromboembolism in patients with prosthetic heart valves. Cases of prosthetic heart valve thrombosis have been reported in patients with prosthetic heart valves who have received enoxaparin for thromboprophylaxis. Confounding factors, including underlying disease and insufficient clinical data, limit the evaluation of these cases. Some of these cases were pregnant women in whom thrombosis led to maternal and foetal death. Pregnant women with mechanical prosthetic heart valves may be at higher risk for thromboembolism (see Precautions: Use in Pregnancy). The use of Enoxaparin Winthrop cannot be recommended for this purpose.

### **Percutaneous Coronary Revascularisation Procedures**

To minimise the risk of bleeding following the vascular instrumentation during the treatment of unstable angina, non-Q-wave myocardial infarction and ST-segment elevation acute myocardial infarction, adhere precisely to the intervals recommended between Enoxaparin Winthrop doses. It is important to achieve haemostasis at the puncture site after PCI. In case a closure device is used, the sheath can be removed immediately. If a manual compression method is used, the sheath should be removed 6 hours after the last IV/SC Enoxaparin Winthrop injection. If the treatment with enoxaparin sodium is to be continued the next scheduled dose should be given no sooner than 6 to 8 hours after sheath removal. The site of the procedure should be observed for signs of bleeding or haematoma formation.

### **Renal Impairment**

In patients with renal impairment, there is an increase in exposure of Enoxaparin Winthrop which increases the risk of bleeding. Since exposure of Enoxaparin Winthrop is significantly increased in patients with severe renal impairment (creatinine clearance <30 mL/min), a dosage adjustment is recommended for therapeutic and prophylactic dosage ranges. Although no dosage adjustment is recommended in patients with moderate (creatinine clearance 30-50 mL/min) and mild (creatinine clearance 50-80 mL/min) renal impairment, careful clinical observation is advised (see Dosage and Administration: Renal Impairment).

Pharmacokinetics of enoxaparin are altered in renal impairment. The extent to which a defect in platelet function in severe renal failure might further contribute to bleeding risk is unknown.

### **Hepatic Impairment**

See Dosage and Administration

### **Low Weight**

An increase in exposure of Enoxaparin Winthrop with prophylactic dosages (non-weight adjusted) has been observed in low-weight women (<45 kg) and low-weight men (<57 kg), which may lead to a higher risk of bleeding. Therefore, careful clinical observation is advised in these patients.

### **Obese Patients**

Obese patients are at higher risk for thromboembolism. The safety and efficacy of prophylactic doses in obese patients (BMI >30 kg/m<sup>2</sup>) has not been fully determined and there is no consensus for dose adjustment. These patients should be observed carefully for signs and symptoms of thromboembolism.

### **Effects on Fertility**

Enoxaparin was found to have no effect on fertility or reproductive performance of male and female rats at subcutaneous and intravenous doses up to 20 mg/kg/day.

### **Use in Pregnancy**

## Category C

In embryo-foetal development studies of enoxaparin there was no evidence of teratogenicity at 30 mg/kg/day SC or 160 mg/kg/day IV in either rats or rabbits. A reduction in rat pup weights occurred at 20 mg/kg/day enoxaparin SC only when administered during the late phase of gestation. An increase in post-implantation loss was noted at 160 mg/kg/day enoxaparin IV in rabbits, but not at 40 mg/kg/day IV, nor in rats at up to 160 mg/kg/day IV. Post-natal development in rats was not affected by doses tested up to a maximum of 20 mg/kg/day enoxaparin IV.

In humans, there is no evidence that enoxaparin sodium crosses the placental barrier during the second trimester of pregnancy. There is no information available concerning the use of Enoxaparin Winthrop during the first and third trimesters. As there are no adequate and well-controlled studies in pregnant women and because animal studies are not always predictive of human response, this drug should be used during pregnancy only if the physician has established a clear need.

There have been reports of congenital anomalies in infants born to women who received enoxaparin during pregnancy including cerebral anomalies, limb anomalies, hypospadias, peripheral vascular malformation, fibrotic dysplasia and cardiac defect. A cause and effect relationship has not been established nor has the incidence been shown to be higher than in the general population.

There have been post-marketing reports of foetal death when pregnant women received Enoxaparin Winthrop. Causality for these cases has not been determined. Pregnant women receiving anti-coagulants, including enoxaparin, are at increased risk of bleeding. Haemorrhage can occur at any site and may lead to death of mother and/or foetus. Pregnant women receiving enoxaparin should be carefully monitored. Pregnant women and women of child-bearing potential should be apprised of the potential hazard to the foetus and the mother if enoxaparin is administered during pregnancy.

The use of enoxaparin for thromboprophylaxis in pregnant women with mechanical prosthetic heart valves has not been adequately studied. In a clinical study of pregnant women with mechanical prosthetic heart valves given Enoxaparin Winthrop (1 mg/kg twice daily) to reduce the risk of thromboembolism, 2 of 8 women developed clots resulting in blockage of the valve and leading to maternal and foetal death. There have been isolated post-marketing reports of valve thrombosis in pregnant women with mechanical prosthetic heart valves while receiving enoxaparin for thromboprophylaxis. Pregnant women with mechanical prosthetic heart valves may be at higher risk for thromboembolism. In the absence of additional dosing, efficacy and safety information in this circumstance, Enoxaparin Winthrop is not recommended for use in pregnant women with mechanical prosthetic heart valves (Precautions: Prosthetic Heart Valves).

### **Use in Lactation**

It is unknown whether enoxaparin is excreted into the breast milk of humans. In lactating rats, the concentration of <sup>35</sup>S-enoxaparin sodium or its labelled metabolites in milk was similar to that in maternal plasma. Apart from lower birth weights and slightly delayed physical development, there were no significant adverse effects of 20 mg/kg/day enoxaparin SC in a peri- and post-natal study in rats. Effects of Enoxaparin Winthrop on lactating women have not been studied.

As a precaution, women should be advised not to breast feed while using Enoxaparin Winthrop.

## Paediatric Use

The safety and efficacy of enoxaparin sodium in children has not been established.

## Use in the Elderly

No increased bleeding tendency is observed in the elderly with the prophylactic dosage ranges. Elderly patients (especially 80 years or older) may be at an increased risk for bleeding complications with the therapeutic dosage ranges. Careful clinical observation is advised. A dosage adjustment may be necessary in elderly patients due to age-related impairment of renal function (see Dosage and Administration: Renal Impairment).

In the clinical study for treatment of acute STEMI, in patients  $\geq 75$  years of age ( $n = 2532$ ) the rate of death or myocardial re-infarction was higher than in the global population but lower in the enoxaparin group (24.8%) than in the UFH group (26.3%, relative risk 0.94,  $p = 0.38$ ). Patients  $\geq 75$  years of age did not receive a 30-mg IV bolus prior to the normal dosage regimen and had their SC dose adjusted to 0.75 mg/kg every 12 hours (see Dosage and Administration).

In patients  $\geq 75$  years of age, the rate of TIMI major bleeding was higher than in the global population and was higher in the enoxaparin group (3.3%) for patients  $\geq 75$  years of age compared with the UFH group (2.9%, RR 1.15,  $p=0.57$ ).

Compared to younger patients ( $<65$  years), the rate of TIMI major bleeding was higher in patients  $\geq 65$  years of age (respectively 1.2% and 2.5%) and was higher in the enoxaparin group as compared to the UFH group (see Clinical Trials).

## Carcinogenicity

No long-term studies in animals have been performed to evaluate the carcinogenic potential of enoxaparin.

## Genotoxicity

Enoxaparin was not genotoxic in *in vitro* tests, including the Ames test, mouse lymphoma cell forward mutation test and human lymphocyte chromosomal aberration test and the *in vivo* rat bone marrow chromosomal aberration test.

## Effect on Laboratory Tests

At doses used for prophylaxis of venous thromboembolism, Enoxaparin Winthrop does not influence bleeding time and global blood coagulation tests significantly, nor does it affect platelet aggregation or binding of fibrinogen to platelets.

At higher doses, increases in aPTT and ACT (activated clotting time) may occur. Increases in aPTT and ACT are not linearly correlated with increasing Enoxaparin Winthrop antithrombotic activity and therefore are unsuitable and unreliable for monitoring Enoxaparin Winthrop activity.

Periodic complete blood counts, including platelet count, and stool occult blood tests are recommended during the course of treatment with Enoxaparin Winthrop. When administered at recommended prophylaxis doses, routine coagulation tests such as Prothrombin Time (PT) and Activated Partial Thromboplastin Time (aPTT) are relatively insensitive measures of Enoxaparin Winthrop activity and, therefore, unsuitable for monitoring. Anti-Factor Xa may be used to monitor the anticoagulant effect of Enoxaparin Winthrop in patients with significant renal impairment. If during Enoxaparin Winthrop therapy abnormal coagulation parameters or bleeding should occur, anti-Factor Xa levels may be used to monitor the anticoagulant effects of Enoxaparin Winthrop.

## Monitoring of Platelet Count

The risk of antibody-mediated heparin-induced thrombocytopenia also exists with low molecular weight heparins. Should thrombocytopenia occur, it usually appears between the 5th and the

21st day following the beginning of Enoxaparin Winthrop treatment. Therefore, it is recommended that the platelet counts be measured before initiation of therapy with Enoxaparin Winthrop and then regularly thereafter during the treatment. In practice, if a confirmed significant decrease of the platelet count is observed (30 to 50% of the initial value), Enoxaparin Winthrop treatment must be immediately discontinued and the patient switched to another therapy.

## INTERACTIONS WITH OTHER MEDICINES

Clinical trials revealed no adverse effects that could be caused by drug interactions, including no pharmacokinetic interactions between enoxaparin and thrombolytics when administered concurrently.

It is recommended that agents which affect haemostasis should be discontinued prior to Enoxaparin Winthrop therapy unless strictly indicated. These agents include medications such as: anti-coagulants, thrombolytics, non-steroidal anti-inflammatory agents (including ketorolac), preparations containing aspirin, systemic salicylates, ticlopidine, Dextran 40, clopidogrel, other anti platelet agents including glycoprotein IIb/IIIa antagonists or systemic glucocorticoids. If the combination is indicated, Enoxaparin Winthrop should be used with careful clinical and laboratory monitoring of the haemostatic factors, when appropriate.

## ADVERSE EFFECTS

### Clinical Trial Data

Enoxaparin sodium has been evaluated in more than 15,000 patients. The following information relates to adverse events observed in controlled clinical trials with patients given Enoxaparin Winthrop prophylaxis of deep vein thrombosis following orthopaedic or abdominal surgery in patients at risk for thromboembolic complications (n = 1176), prophylaxis of deep vein thrombosis in acutely ill medical patients with severely restricted mobility (n = 1169), treatment of deep vein thrombosis with or without pulmonary embolism (n = 669) or with patients given Enoxaparin Winthrop for the treatment of unstable angina or non-Q-wave myocardial infarction, administered concurrently with aspirin (n = 1578) or with patients given Enoxaparin Winthrop for the treatment of acute ST-segment elevation myocardial infarction (n = 10176).

Reported adverse events are presented at frequencies of:

<i>Very common</i>	$\geq 1/10$ (10%)
<i>common</i>	$\geq 1/100$ (1%) and $< 1/10$ (10%)
<i>uncommon</i>	$\geq 1/1000$ (0.1%) and $< 1/100$ (1%)
<i>rare</i>	$\geq 1/10000$ (0.01%) and $< 1/1000$ (0.1%)
<i>very rare</i>	$< 1/10000$ (<0.01%)

### Haematological

*Common:* Anaemia

In clinical trials haemorrhages were the most commonly reported adverse effect. These included major haemorrhages, reported at most 4.2% in surgical patients receiving prophylaxis. Bleeding may occur in the presence of associated risk factors such as: organic lesions liable to bleed, invasive procedures or the use of medications affecting haemostasis (see Precautions and Precautions: Interactions with Other Medicines). Major haemorrhage, including retroperitoneal and intracranial bleeding, has been reported. Some of these cases have been fatal.

Haemorrhages -

MedDRA system organ	Prophylaxis in surgical	Prophylaxis in medical	Treatment in patients with	Treatment in patients with	Treatment in patients with
---------------------	-------------------------	------------------------	----------------------------	----------------------------	----------------------------

class	patients	patients	DVT with or without PE	unstable angina and non-Q-wave MI	acute STEMI
Vascular Disorders	Very common: Haemorrhage* Rare: Retroperitoneal haemorrhage	Common: Haemorrhage*	Very common: Haemorrhage* Uncommon: Intracranial haemorrhage, Retroperitoneal haemorrhage	Common: Haemorrhage* Rare: Retroperitoneal haemorrhage	Common: Haemorrhage* Uncommon: Intracranial haemorrhage, Retroperitoneal haemorrhage

\* such as haematoma, ecchymosis other than at injection site, wound haematoma, haematuria, epistaxis and gastro-intestinal haemorrhage.

### Blood Disorders

Mild, transient thrombocytopenia has been reported during the first days of therapy.

Thrombocytopenia and thrombocytosis -

MedDRA system organ class	Prophylaxis in surgical patients	Prophylaxis in medical patients	Treatment in patients with DVT with or without PE	Treatment in patients with unstable angina and non-Q-wave MI	Treatment in patients with acute STEMI
Blood and lymphatic system disorders	Very common: Thrombocytosis* Common: Thrombocytopenia	Uncommon: Thrombocytopenia	Very common: Thrombocytosis* Common: Thrombocytopenia	Uncommon: Thrombocytopenia	Common: Thrombocytosis* Thrombocytopenia Very rare: Immuno-allergic thrombocytopenia

\*Platelet increased  $>400 \times 10^9/L$

### Hepatobiliary Disorders

*Very common:* Asymptomatic and reversible increases in the levels of liver enzymes (eg. transaminases) have been reported [NOTE: Liver enzymes were not assessed in the Unstable Angina Population].

### Gastrointestinal

*Common:* Nausea, diarrhoea

### Other

*Common:* Peripheral oedema, fever

### Psychiatric Disorders

*Common:* Confusion

### Immune System Disorders

*Common:* Allergic reaction

*Rare:* Anaphylactic/ anaphylactoid reaction (see also **Post-Marketing Experience**)

### Skin and Subcutaneous Tissue Disorders

*Common:* Urticaria, pruritus, erythema

*Uncommon:* Bullous dermatitis

## General Disorders and Administration Site Conditions

*Common:* Injection site haematoma, injection site pain, other injection site reaction (such as injection site oedema, haemorrhage, hypersensitivity, inflammation, mass, pain or reaction)

*Uncommon:* Local irritation, skin necrosis at injection site

## Investigations

*Rare:* Hyperkalaemia

## **Post-Marketing Experience**

The following information relates to events observed following the marketing of Enoxaparin Winthrop. Voluntary reports of adverse events that have been received since market introduction (without causal relationship) that are not listed previously are cited below.

### Immune System Disorders

Anaphylactic/ anaphylactoid reactions including shock have been reported.

### Nervous System Disorders

Headaches have been reported.

### Haematological

*Rare:* There have been rare reports of spinal or neuraxial haematomas with the concurrent use of Enoxaparin Winthrop and spinal/epidural anaesthesia, spinal puncture or post-operative indwelling catheters. These events have resulted in varying degrees of neurologic injuries including long-term or permanent paralysis (see Precautions).

### Blood Disorders

Rare cases of immuno-allergic thrombocytopenia with or without thrombosis have been reported. In some cases, thrombosis was complicated by organ infarction or limb ischaemia (see Precautions).

Asymptomatic and reversible increases in platelet counts, haemorrhagic anaemia and eosinophilia have been reported.

### Hypersensitivity and Skin - Injection site

*Very rare:* Pain, haematoma and mild local irritation may follow the subcutaneous injection of Enoxaparin Winthrop.

Hard inflammatory nodules, which are not cystic enclosures of Enoxaparin Winthrop, have been observed at the injection site. They resolve after a few days and should not cause treatment discontinuation.

Rare cases of skin necrosis, usually occurring at the injection site, have been reported with both unfractionated and low molecular weight heparins. These phenomena are usually preceded by purpura or erythematous plaques, infiltrated and painful. Treatment must be discontinued immediately.

Alopecia has also been reported.

### Systemic Allergic Reactions

*Rare:* Cutaneous (bullous) or systemic allergic reactions (such as pruritus, rash and urticaria), including anaphylactic/anaphylactoid reactions, may occur. In some cases discontinuation of the treatment may be necessary.

Cases of hypersensitivity cutaneous vasculitis have been reported.



### Metabolism Disorders

Cases of hyperkalaemia have been reported with heparins and low molecular weight heparins. Use of low molecular weight heparins over extended periods has been reported to be associated with development of osteopenia. Very rare cases of hyperlipidemia have also been reported.

### Hepatobiliary Disorders

Hepatocellular liver injury and cholestatic liver injury have been reported.

### Musculoskeletal and Connective Tissue Disorders

Osteoporosis following long-term therapy (greater than 3 months) has been reported.

## **DOSAGE AND ADMINISTRATION**

For subcutaneous use: do not mix Enoxaparin Winthrop with other injections or solutions.

For intravenous use: see Dosage and Administration: Treatment of Acute ST-segment Elevation Myocardial Infarction.

### **Prophylaxis of Venous Thrombosis**

Prophylaxis against thromboembolism should be tailored according to the patient's risk. Risk factors include age over 40 years, history of deep vein thrombosis or pulmonary embolism, surgery and other trauma, prolonged immobilisation, cardiac disease, obesity, malignancy, varicose veins, hypercoagulable states, pregnancy and the puerperium, oral contraceptives, severe infection, inflammatory bowel disease.

#### a) High Risk Patients

In patients with high risk of thromboembolism, an Enoxaparin Winthrop dosage of 40 mg (0.4 mL; anti-Xa: 4000 IU) should be administered subcutaneously once daily. In high risk patients undergoing surgery, the initial dose should be given approximately 12 hours preoperatively. The timing of the first dose may need to be modified if spinal/epidural anaesthesia is to be performed (see Precautions: Spinal/Epidural Anaesthesia).

#### b) Moderate Risk Patients

In patients with a moderate risk of thromboembolism, the recommended Enoxaparin Winthrop dosage is 20 mg (0.2 mL; anti-Xa: 2000 IU) subcutaneously once daily. In moderate risk patients undergoing surgery, the initial dose should be given approximately 2 hours preoperatively. The timing of the first dose may need to be modified if spinal/epidural anaesthesia is to be performed (see Precautions: Spinal/Epidural Anaesthesia).

### Duration of Therapy

High to Moderate Risk: Prophylaxis should be continued for 7 to 10 days or until the risk of thromboembolism has diminished.

### Prolonged Thromboprophylaxis

Therapy with 40 mg once daily for 30 post-operative days has been proven to be beneficial in total hip replacement surgery.

Under normal conditions of use, Enoxaparin Winthrop does not modify global clotting tests and therefore there is no need to perform these tests in order to monitor therapy.

### **Prophylaxis of Venous Thromboembolism in Medical Patients**

The recommended dose should be 40 mg once daily by subcutaneous injection for a minimum of 6 days, continuing for a maximum of 14 days or less if the patient returns to full ambulation earlier than 14 days.

## **Treatment of Deep Venous Thrombosis**

The initial clinical trials which established the efficacy of Enoxaparin Winthrop in the treatment of deep venous thrombosis were conducted on patients who were initially treated with heparin and then changed to Enoxaparin Winthrop when a definitive diagnosis was established. However, the use of heparin prior to Enoxaparin Winthrop is not currently recommended. The average duration of therapy in the clinical trials was 10 days. No data are available on the safety of long term treatment. Data on use in patients over 65 years of age in these trials were limited.

The recommended dosage for treatment of established deep vein thrombosis with Enoxaparin Winthrop is 1.5 mg/kg body weight once daily (150 IU anti-Xa activity/kg bodyweight) or 1 mg/kg body weight (100 IU anti-Xa activity/kg bodyweight) twice daily subcutaneously. In high risk patients, e.g. the obese or patients with baseline iliac vein thrombosis or cancer, a dose of 1 mg/kg body weight administered twice daily may be more beneficial.

Warfarin sodium therapy should be initiated when appropriate (usually within 72 hours of commencing Enoxaparin Winthrop initiation). Enoxaparin Winthrop should be continued for a minimum of 5 days and until a therapeutic oral anticoagulant effect has been achieved (International Normalization Ratio 2.0 to 3.0).

## **Treatment of Unstable Angina and Non-Q-Wave-Myocardial Infarction**

The recommended dose of Enoxaparin Winthrop is 1 mg/kg (100 IU anti-Xa activity/kg) every 12 hours by subcutaneous injection, administered concurrently with oral aspirin.

Treatment with Enoxaparin Winthrop in these patients should be prescribed for a minimum of 2 days and a maximum of 8 days.

## **Treatment of Acute ST-segment Elevation Myocardial Infarction**

In patients with acute ST-segment elevation myocardial infarction, administered in conjunction with a fibrinolytic (fibrin-specific or non-fibrin specific), the recommended dose of Enoxaparin Winthrop is a single IV bolus of 30 mg plus a 1 mg/kg SC dose, followed by 1 mg/kg administered SC every 12 hours (maximum 100 mg for each of the first two SC doses only, followed by 1 mg/kg dosing for the remaining doses). For dosage in patients  $\geq 75$  years of age, see Dosage and Administration: Renal Impairment and Elderly.

When administered in conjunction with a thrombolytic (fibrin-specific or non-fibrin specific), Enoxaparin Winthrop should be given between 15 minutes before and 30 minutes after the start of fibrinolytic therapy. All patients should receive aspirin as soon as they are identified as having STEMI (100 to 300 mg once daily, unless contraindicated). The recommended duration of Enoxaparin Winthrop treatment is 8 days or until hospital discharge, whichever comes first.

For patients further managed with Percutaneous Coronary Intervention (PCI): If the last Enoxaparin Winthrop SC administration was given less than 8 hours before balloon inflation, no additional dosing is needed. If the last Enoxaparin Winthrop SC administration was given more than 8 hours before balloon inflation, an IV bolus of 0.3 mg/kg of Enoxaparin Winthrop should be administered (see Precautions: Percutaneous Coronary Revascularisation Procedures).

## **Haemodialysis**

In patients undergoing repeated sessions of haemodialysis, the prevention of thrombosis in the extracorporeal blood circuit is obtained by injection of a dose of 1 mg/kg (100 IU anti-Xa activity/kg) into the arterial line of the dialysis circuit at the start of the session. This dose is usually sufficient for a 4-hour haemodialysis session. If fibrin rings are formed, a fresh injection of 0.5 to 1 mg/kg (50 to 100 IU anti-Xa activity/kg) should be made depending on the time before the end of the dialysis.

In haemodialysed patients with a high risk of haemorrhage, (in particular, in pre or post-operative dialysed patients) or with a progressive haemorrhagic disorder, the dialysis sessions may be carried out by using a dose of 0.5 mg/kg (50 IU anti-Xa activity/kg) (double vascular access) or 0.75 mg/kg (75 IU anti-Xa activity/kg) (single vascular access).

### Renal Impairment

A dosage adjustment is required for patients with severe renal impairment (creatinine clearance <30 mL/min) according to the following tables.

The following dosage adjustments are recommended for the prophylactic dosage ranges.

Normal Dosing	Severe renal impairment
40 mg SC once daily	20 mg SC once daily
20 mg SC once daily	20 mg SC once daily

The following dosage adjustments are recommended for the treatment dosage ranges.

Normal Dosing	Severe renal impairment
1 mg/kg SC twice daily	1 mg/kg SC once daily
1.5 mg/kg SC once daily	1 mg/kg SC once daily
Acute STEMI patients < 75 years of age	
30 mg-single IV bolus plus a 1 mg/kg SC dose followed by 1 mg/kg SC twice daily (Max 100mg for each of the first two SC doses)	30 mg-single IV bolus plus a 1 mg/kg SC dose followed by 1 mg/kg SC once daily (Max 100mg for first SC dose only)
Acute STEMI patients ≥ 75 years of age	
0.75 mg/kg SC twice daily without initial bolus (Max 75mg for each of the first two SC doses)	1 mg/kg SC once daily without initial bolus (Max 75mg for first SC dose only)

Although no dosage adjustment is recommended in patients with moderate (creatinine clearance 30-50 mL/min) and mild (creatinine clearance 50-80 mL/min) renal impairment, careful clinical observation is advised for signs and symptoms of bleeding.

### Elderly

For treatment of acute ST-segment Elevation Myocardial Infarction in elderly patients ≥75 years of age, do not use an initial IV bolus. Initiate dosing with 0.75 mg/kg SC every 12 hours (maximum 75 mg for each of the first two SC doses only, followed by 0.75 mg/kg dosing for the remaining doses; see Clinical Trials: Acute ST-segment Elevation Myocardial Infarction). No dose reduction is necessary in the elderly for other indications, unless renal function is impaired, however careful clinical observation is advised (see Precautions: Renal Impairment and Elderly).

### Children

The safety and efficacy of Enoxaparin Winthrop in children has not been established.

### Hepatic Impairment

In the absence of clinical studies, caution should be used in hepatically impaired patients.

### **Subcutaneous Injection Technique**

Injection should be made preferably when the patient is reclining. Enoxaparin Winthrop is administered by deep subcutaneous injection. Injection of Enoxaparin Winthrop should be alternated between the left and right anterolateral abdominal wall using a different site for each injection. Do not expel the air bubble from the syringe before the injection to avoid the loss of drug. Enoxaparin Winthrop contains no antimicrobial agent and should be used only once and then discarded.

The needles on pre-filled syringes of Enoxaparin Winthrop are covered in a silicon coating, to enable ease of penetration. Do not wipe the needle or allow Enoxaparin Winthrop solution to crystallise on the needle prior to use, as this will damage the silicon coating. A “dart” injection technique should be used to administer Enoxaparin Winthrop. Do not rub the injection site after administration.

### **Intravenous (Bolus) Injection Technique (for the treatment of acute STEMI)**

For intravenous injection, the graduated prefilled syringes should be used, see subsection below. Enoxaparin Winthrop should be administered through an intravenous line and should not be co-administered with other medications. To avoid the possible mixture of Enoxaparin Winthrop with other drugs, the intravenous access chosen should be flushed with a sufficient amount of saline or dextrose solution prior to and following the intravenous bolus administration of Enoxaparin Winthrop to clear the port of drug. Enoxaparin Winthrop may be safely administered with normal saline solution (0.9%) or 5% dextrose in water.

### **Prefilled Syringes**

The prefilled syringes are ready for immediate use. The whole length of the needle should be introduced vertically (at a 90° angle to the skin) into the thickness of a skin fold gently held between the operator's thumb and finger. This skin fold should be held throughout the duration of the injection.

### **Graduated Prefilled Syringes**

When using the 60 mg, 80 mg, 100 mg, 120 mg and 150 mg graduated prefilled syringes, the volume to be injected should be measured precisely according to the dosage recommended, without expelling the air bubble while adjusting dosage. If the dose required is exactly 60, 80, 100, 120 or 150 mg inject the full contents of the syringe. The whole length of the needle should be introduced vertically (at a 90° angle to the skin) into the thickness of a skin fold gently held between the operator's thumb and finger. This skin fold should be held throughout the duration of the injection.

## **OVERDOSAGE**

Oral ingestion of Enoxaparin Winthrop (no reported cases) should lead to no serious consequences, taking into account the very low gastric and intestinal absorption of the product. This may be checked by carrying out a plasma assay of the anti-Xa and anti-IIa activities.

Accidental overdosage after intravenous, extracorporeal or subcutaneous administration of massive doses of Enoxaparin Winthrop may lead to haemorrhagic complications through anti-coagulant activity. This may be largely neutralised by the slow intravenous infusion of protamine. Particular care should be taken to avoid overdosage with protamine, as even with high doses of protamine, the anti-Xa activity of Enoxaparin Winthrop is never completely neutralised (maximum reversal of 60%), even though the anti-coagulant activity is neutralised. (See the prescribing information for protamine salts).

The dose of protamine depends on the dose of Enoxaparin Winthrop injected. If Enoxaparin Winthrop was administered in the previous 8 hours, 1 mg or 100 anti-heparin units of protamine neutralises the anti-IIa activity generated by 1 mg (100 IU anti-Xa activity) of Enoxaparin Winthrop. An infusion of 0.5 mg protamine per 1 mg of Enoxaparin Winthrop may be administered if Enoxaparin Winthrop was administered greater than 8 hours previously, or if it has been determined that a second dose of protamine is required. Protamine administration may not be required 12 hours after the Enoxaparin Winthrop injection. However, depending on the clinical circumstances, eg the size of the dose of Enoxaparin Winthrop, whether or not a therapeutic level of anticoagulation needs to be retained and whether or not the patient is actively bleeding, the administration of a reduced dose of protamine may not be advisable.

For advice on the management of overdose, please contact the poisons information centre on 13 1126.

## **PRESENTATION AND STORAGE CONDITIONS**

### **Enoxaparin Winthrop**

20 mg/0.2 mL (anti-Xa: 2,000 IU) ready-to-use, pre-filled syringes, 10s

40 mg/0.4 mL (anti-Xa: 4,000 IU) ready-to-use, pre-filled syringes, 10s

60 mg/0.6 mL (anti-Xa: 6,000 IU) ready-to-use, pre-filled syringes with graduated markings, 10s

80 mg/0.8 mL (anti-Xa: 8,000 IU) ready-to-use, pre-filled syringes with graduated markings, 10s

100 mg/1 mL (anti-Xa: 10,000 IU) ready-to-use, pre-filled syringes with graduated markings, 10s

### **Enoxaparin Winthrop (with automatic safety lock system)**

20 mg/0.2 mL (anti-Xa: 2,000 IU) ready-to-use, pre-filled syringes, 10s<sup>#</sup>

40 mg/0.4 mL (anti-Xa: 4,000 IU) ready-to-use, pre-filled syringes, 10s<sup>#</sup>

60 mg/0.6 mL (anti-Xa: 6,000 IU) ready-to-use, pre-filled syringes with graduated markings, 10s<sup>#</sup>

80 mg/0.8 mL (anti-Xa: 8,000 IU) ready-to-use, pre-filled syringes with graduated markings, 10s<sup>#</sup>

100 mg/1 mL (anti-Xa: 10,000 IU) ready-to-use, pre-filled syringes with graduated markings, 10s<sup>#</sup>

### **Enoxaparin Winthrop Forte**

120 mg/0.8mL (anti-Xa: 12,000 IU) ready-to-use, pre-filled syringes with double graduated markings, 10s<sup>#</sup>

150 mg/1 mL (anti-Xa: 15,000 IU) ready-to-use, pre-filled syringes with double graduated markings, 10s<sup>#</sup>

### **Enoxaparin Winthrop Forte (with automatic safety lock system)**

120 mg/0.8mL (anti-Xa: 12,000 IU) ready-to-use, pre-filled syringes with double graduated markings, 10s<sup>#</sup>

150 mg/1 mL (anti-Xa: 15,000 IU) ready-to-use, pre-filled syringes with double graduated markings, 10s<sup>#</sup>

Do not freeze Enoxaparin Winthrop.

Enoxaparin Winthrop 20 mg/0.2 mL, Enoxaparin Winthrop 40 mg/0.4 mL, Enoxaparin Winthrop 60 mg/0.6 mL, Enoxaparin Winthrop 80 mg/0.8 mL and Enoxaparin Winthrop 100 mg/1 mL injection syringes: Store for three years below 25°C.

Enoxaparin Winthrop Forte (120 mg/0.8 mL, 150 mg/1 mL) injection syringes: Store for two years below 25°C.

# Not marketed

**NAME AND ADDRESS OF THE SPONSOR**

sanofi-aventis australia pty ltd  
12-24 Talavera Road  
Macquarie Park NSW 2113

**POISON SCHEDULE OF THE MEDICINE**

Prescription Only Medicine (S4)

**DATE OF FIRST INCLUSION IN THE ARTG**

17 October 2017

\*References to “ENOXAPARAIN WINTHROP” refer to both ENOXAPARAIN WINTHROP and ENOXAPARAIN WINTHROP FORTE